



The Wattle



A compact, yet spacious, one bedroom cabin with bathroom, kitchenette, living and dining area.

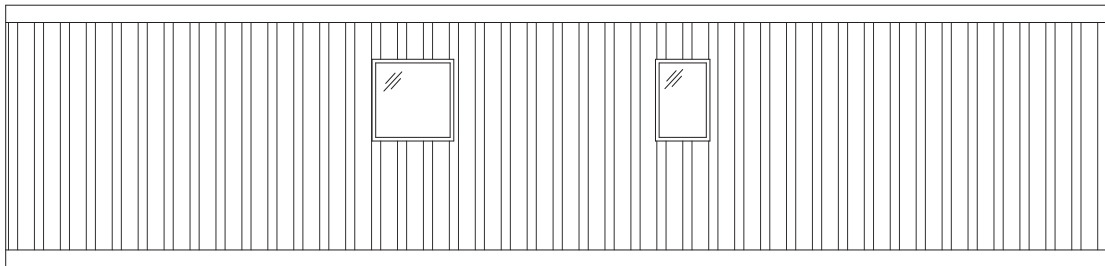
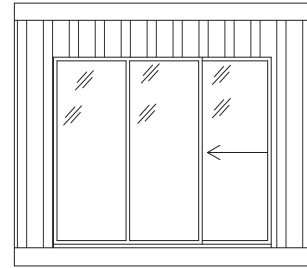
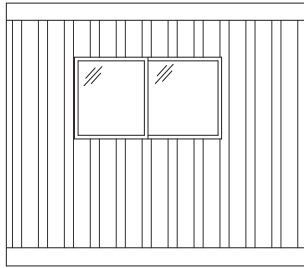
STRUCTURE

EXTERNAL SIZE & TARE WEIGHT	1 x (12192 X 3300 X 2896) at 8,500kg approx.
EXTERNAL WALL & ROOF FINISH	1.6MM PPG Corten steel pre-painted panel, engineered steel structure conforming to ISO/ASTM.
INTERNAL WALL & CEILING FINISH	10mm plasterboard/Villa Board optional.
FLOOR FINISH	15mm FC sheet with vinyl finish.
EXTERNAL DOORS	Sliding aluminium frame external doors.
INTERNAL DOORS	Solid core timber internal doors.
WINDOWS	Aluminium windows with safety glass.
JOINERY	Laminate MDF cabinets and tops.
PLUMBING	Copper piping with mains outlet. UPVC sanitary plumbing to outlets.
ELECTRICAL	All wiring within conduit system. Electrical fittings include: Television, phone, data points, light fittings and GPO's

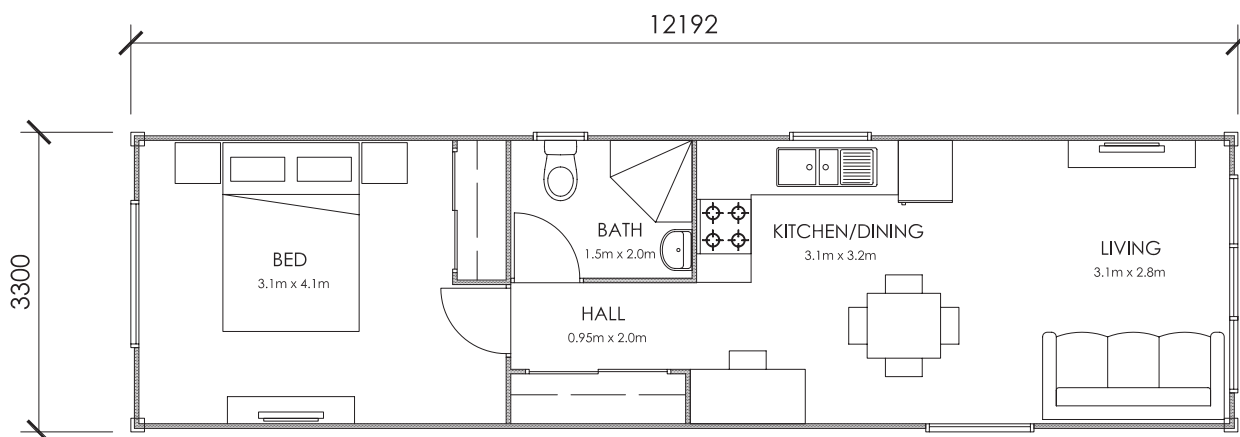


- Designed to meet BCA and other relevant standards
- Acoustically superior insulation
- Thermal insulation designed for 5 star energy rating
- Cyclonic structural design and certifications as required
- Robust steel structure
- Easy to transport, quick to install
- Flexible in design and layout

The Wattle



Elevations



Plan