



The Territory



An exceptional three bedroom designer home, comprising of a spacious living/dining area, full kitchen, bathrooms and laundry.

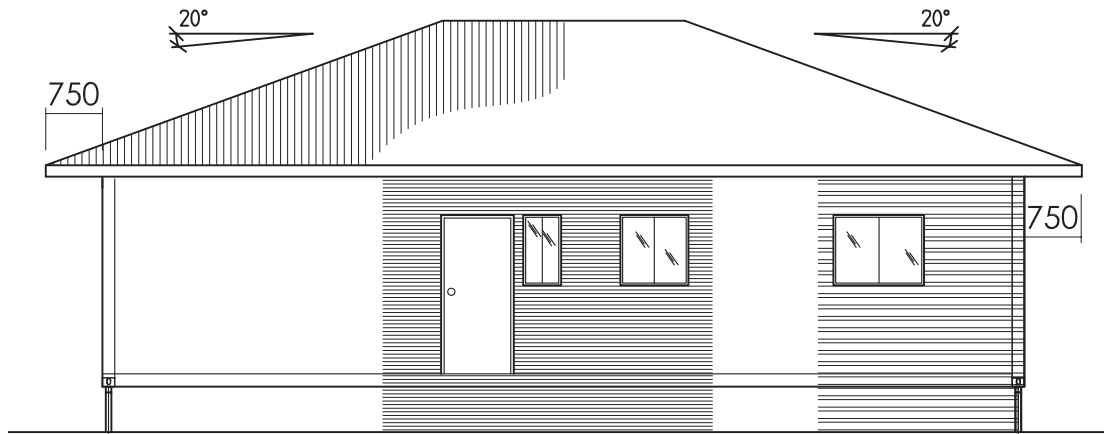
STRUCTURE

EXTERNAL SIZE & TARE WEIGHT	3 x (12192 X 3000 X 3100) at 24,000kg approx.
EXTERNAL WALL & ROOF FINISH	1.6MM PPG Corten steel pre-painted panel, engineered steel structure conforming to ISO/ASTM.
INTERNAL WALL & CEILING FINISH	10mm plasterboard/Villa Board optional.
FLOOR FINISH	13mm. 2mm vinyl floor PVC to wet areas and carpet to all bedrooms and living areas.
EXTERNAL DOORS	Sliding aluminium frame external doors.
INTERNAL DOORS	Hollow core timber internal doors.
WINDOWS	Aluminium windows with safety glass.
JOINERY	Laminate MDF cabinets and tops.
PLUMBING	Copper piping with mains outlet. UPVC sanitary plumbing to outlets.
ELECTRICAL	All wiring within conduit system. Electrical fittings include: Television, phone, data points, light fittings and GPO's

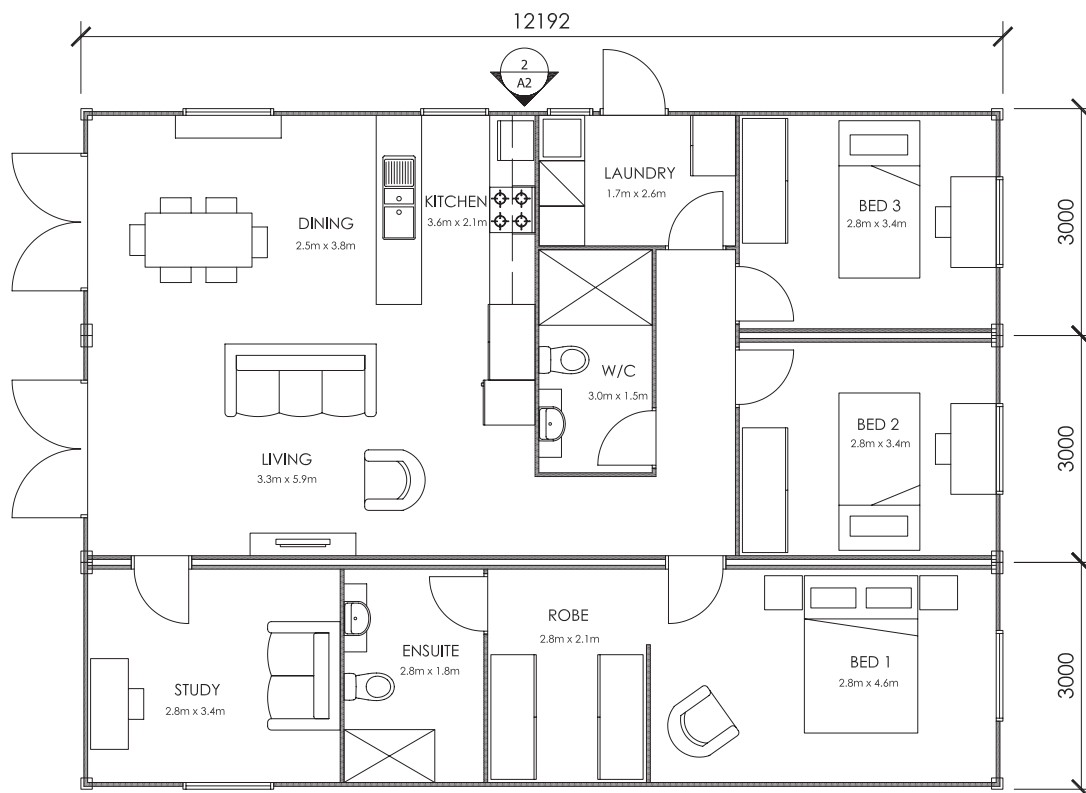


- Designed to meet BCA and other relevant standards
- Acoustically superior insulation
- Thermal insulation designed for 5 star energy rating
- Cyclonic structural design and certifications as required
- Robust steel structure
- Easy to transport, quick to install
- Flexible in design and layout

The Territory



Elevation



Plan