



Laundry Block

One unit modular with four separate rooms. Each room has a personal ensuite, robes and desk.

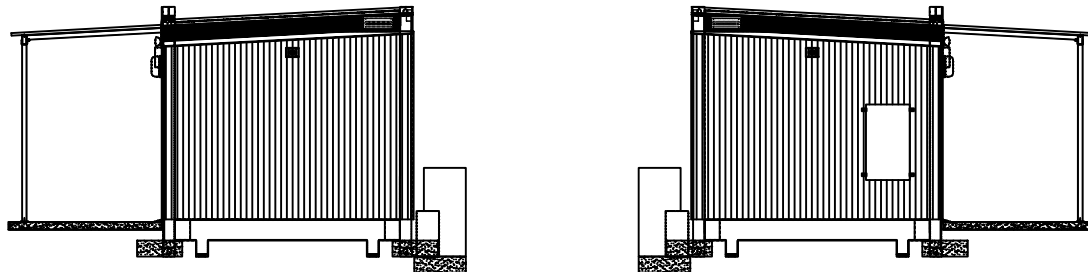
STRUCTURE

EXTERNAL SIZE & TARE WEIGHT	1 x (14400 X 3300 X 3300) at 18,000kg approx.
EXTERNAL WALL & ROOF FINISH	1.6MM Corten steel pre-painted panel, engineered steel structure conforming to ISO/ASTM. Colorbond cladding finish.
INTERNAL WALL & CEILING FINISH	Walls - 9mm FC Board – Recessed edges. Flush finish. Ceiling - 6mm FC Board – Recessed edges. Flush Finish
FLOOR FINISH	ALC (Aerated Lightweight Concrete) Panel. Vinyl finish 2mm.
EXTERNAL DOORS	50mm Steel hinged door, 1mm PPZ skin with PU core.
INTERNAL DOORS	Hollow core timber door.
WINDOWS	Windows powder-coated aluminium double-glazed. (Awning 600 x 600 and sliding 1200 X 1200). Region D tested.
JOINERY	Laminate MDF cabinets and tops
PLUMBING	Copper piping with mains outlet. UPVC sanitary plumbing to outlets.
ELECTRICAL	All wiring within conduit system. Electrical fittings include: Television, phone, data points, light fittings and GPO's

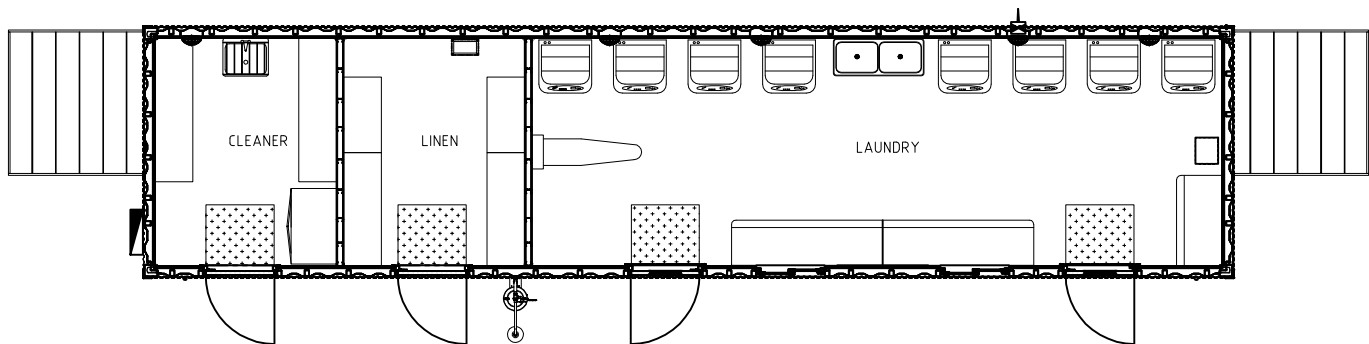


- Designed to meet NCC and other relevant standards
- Acoustically superior insulation
- Thermal insulation designed for 6 star energy rating
- Cyclonic structural design testing and certifications
- Robust steel structure for stacking and transport
- Easy to transport, quick to install

Laundry Block



Elevations



Plan